



Būot
TINY HOMES

Introducing the
Next Generation
of Tiny Homes.

Buot.ca

Above: 08L+. 451ft². Components: 01+02+03L+.

The Būot Tiny Home series is the most flexible pre-fabricated modular design currently available in the Canadian Tiny Home market.

Our revolutionary Tiny Homes are customizable, modular, on-foundation, and code-compliant. Būot homes are a high-quality, turn-key affordable housing solution that will change the way Canadians think about Tiny Living and home ownership.

Būot is a full-service home builder. We help our clients through every stage of the process including design, obtaining permits, preparing the site, and final installation.



Būot
**DESIGN
YOUR OWN
HOME**

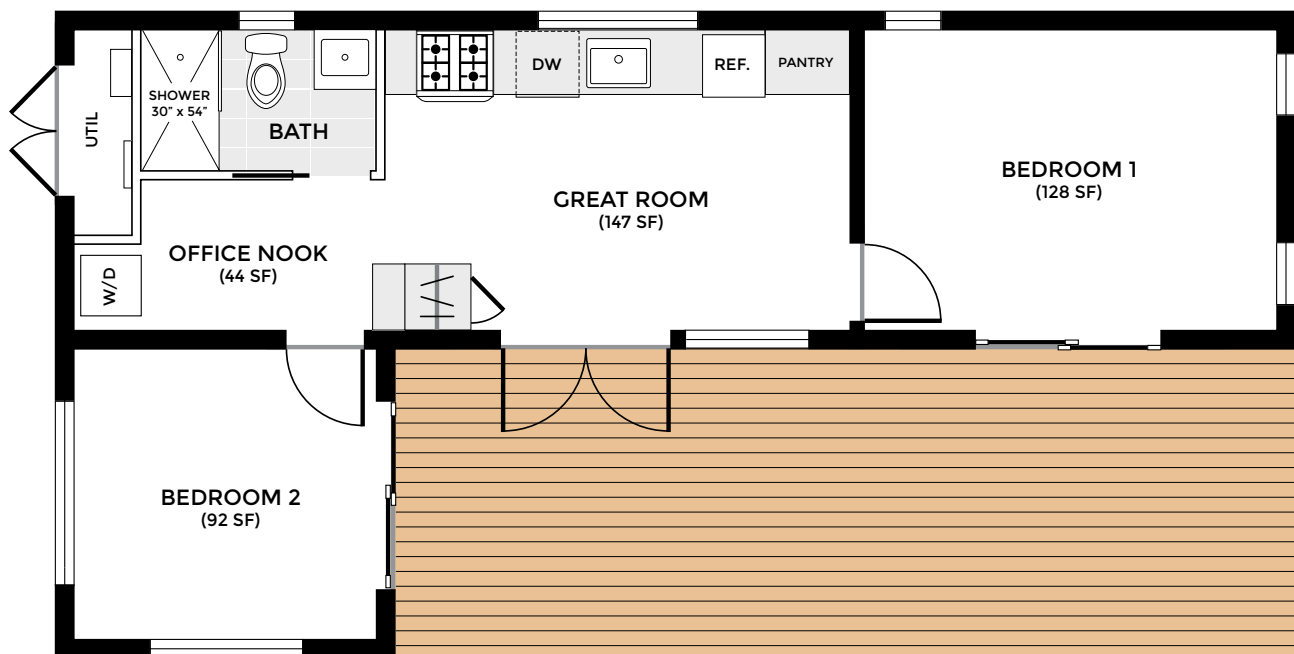
COMING SOON to our website:
*Explore the possibilities with our
D.I.Y. Tiny Home design software.*

The Būot Tiny Homes Building Experience

Our team of experts will work with you to customize your Būot Tiny Home to your specifications, ensuring that your living space is tailored to your unique lifestyle.

- 1 Configure** your Būot home from any combination of our versatile, prefabricated, fully finished living spaces.
- Choose **exterior finishes** that feel like home to you.
- Work with our team to **tailor the interior** to your lifestyle needs.
- Use our knowledgeable team to get all the necessary **permits and inspections**.
- Sit back while we **prepare your site** for installation.
- Receive delivery** of your custom tiny home and start living your best life!

SAMPLE FLOOR PLAN: 08L+



POSSIBLE CONFIGURATIONS

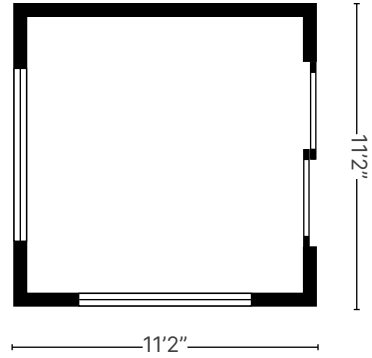
BASE MODULES



CONFIGURATIONS*



* For details on each configuration, refer to detail pages.

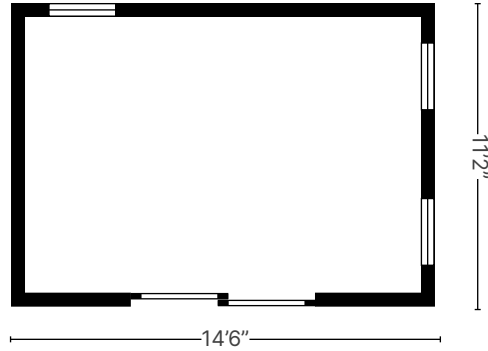


The smallest module in our collection, module 01 is 92 square feet of extra living space. This unit is fully insulated (R?) with double pane windows, in-floor heat and an option to add a mini split system for additional heating and cooling.

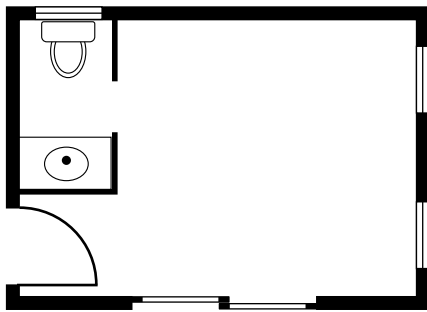
Potential Uses: Work-from-home backyard retreat, a garden studio, a bunkie for out of town guests, a yoga sanctuary.

NOTE: This module does not include an option for plumbing. No permits required in Ontario.

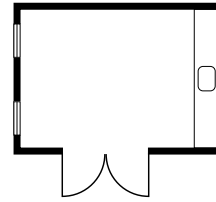
L x W (footprint)	Interior Living Space	Shape	Max # of Bedrooms	Max # of Baths	Kitchen Option	Base Price*
11'2" x 11'2" (125ft ²)	92ft ²	Square	1	0	No	\$55,000



02L



02R



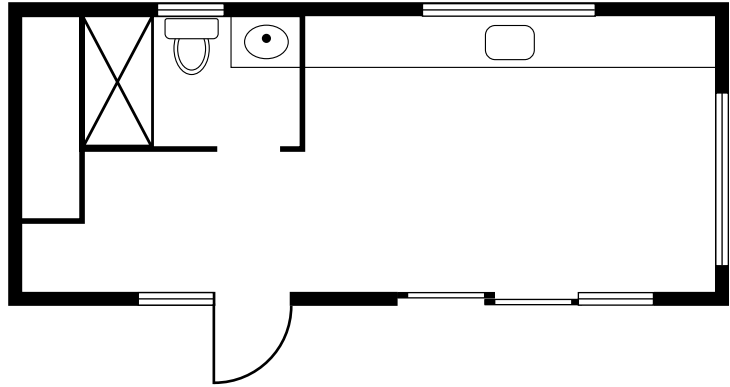
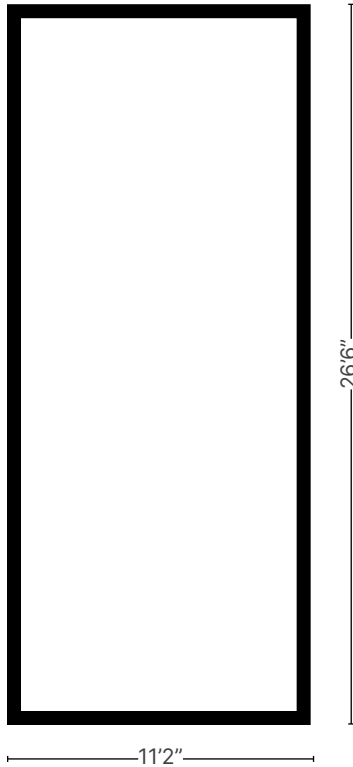
Module 02 is 129ft² and includes a flex space and the option to include a kitchenette or 2 piece washroom. This space works well on its own or as an add-on to another Buot module. Like all our units, it comes with double pane windows, optional in-floor heat or baseboard heat and/or a mini split system, whichever best suits your needs. Sliding glass doors are an option we offer either as the main point of entry or a secondary route to the outdoors.

Potential Uses: Short-term rental unit, bunkie, additional living space for extended family. Option to include a kitchenette or 2 piece washroom.

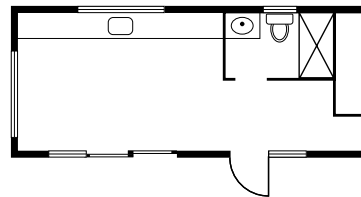
L x W (footprint)	Interior Living Space	Shape	Max # of Bedrooms	Max # of Baths	Kitchen Option	Base Price*
14'6" x 11'2" (162ft ²)	129ft ²	Rectangle	1	1 2pc.	Yes	\$60,000

**For units with plumbing, additional fees apply.*

03L / 03L+



03R / 03R+



+ (Canopy L)



+ (Canopy R)



The largest of our three base modules at 230ft², module 03 has everything you need. A 3-piece bath, laundry station, office nook, full kitchen and living/bedroom flex space are carefully configured to give you an open floor plan with lots of natural light and a feeling of connection to the outdoors. A fully contained utility shed keeps the mechanicals accessible for maintenance but out of your sightline.

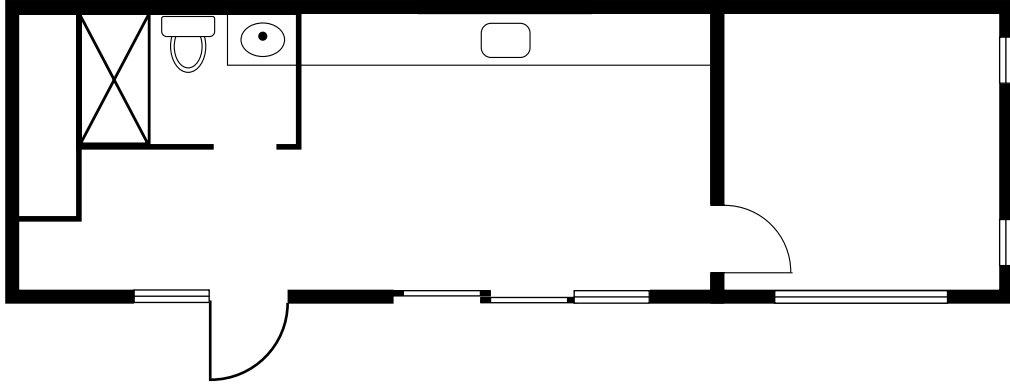
Upgrade to lofty ceilings with a Canopy roof extension. It raises the ceiling height to create expansive vertical space, and provides a pocket of additional storage room above the washroom area for infrequently used items. More light will filter into your home through the array of windows we include standard in the Canopy.

Potential Uses: Primary residence, short- or long-term rental unit, laneway house, backyard ADU.

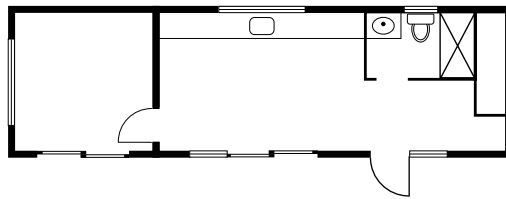
L x W (footprint)	Interior Living Space	Shape	Max # of Bedrooms	Max # of Baths	Kitchen Option	Base Price*
26'6" x 11'2" (292ft ²)	230ft ²	Rectangle	1	1 full bath	Yes	\$150,000

*For units with a Canopy roof extension, add \$10,000 to base price.

04L / 04L+



04R / 04R+



+ (Canopy L)



+ (Canopy R)



Module 03 is extended in a linear configuration using the 01 module. This affords the homeowner valuable space for a dedicated bedroom, home office, gym, storage, guest accommodations, a hobby room, etc. The Canopy roof extension can also be added to module 03 in this configuration for additional height over the main living space.

Potential Uses: Primary residence, short- or long-term rental unit, laneway house, backyard ADU.

L x W (footprint)	Interior Living Space	Shape	Max # of Bedrooms	Max # of Baths	Kitchen Option	Base Price*
-------------------	-----------------------	-------	-------------------	----------------	----------------	-------------

37'8" x 11'2"
(415ft²)

322 ft²

Rectangle

2

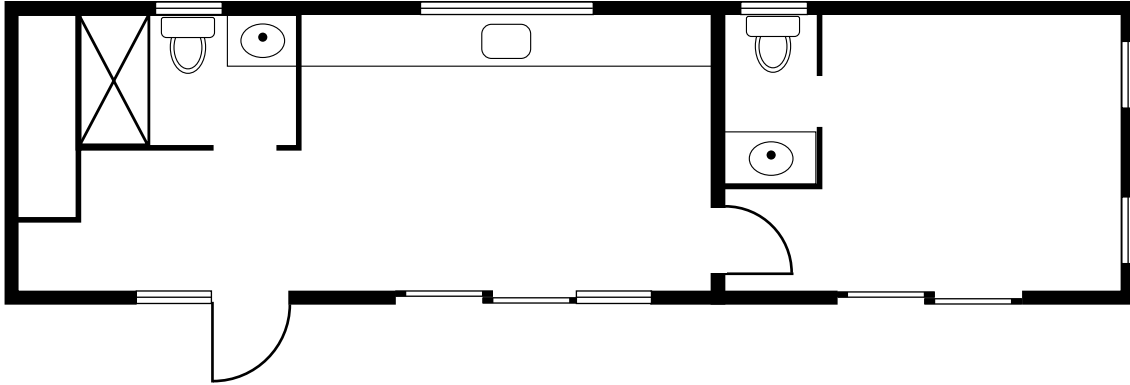
1 full bath

Yes

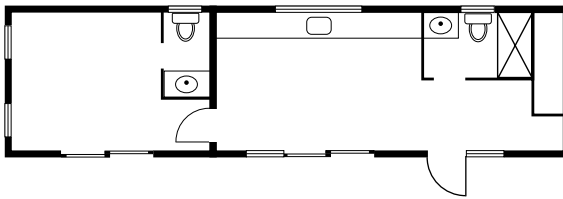
\$195,000

*For units with a Canopy roof extension, add \$10,000 to base price.

05L / 05L+



05R / 05R+



+ (Canopy L)



+ (Canopy R)



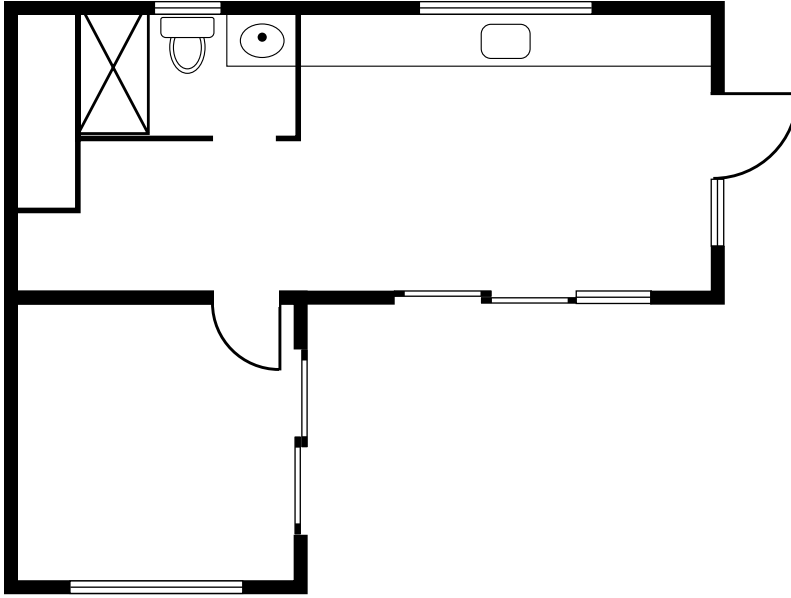
Module 03 can be extended in a linear configuration using the 02 module. This affords the homeowner valuable space for a dedicated bedroom, home office, gym, storage, a second washroom, guest accommodations, a hobby room, etc. The Canopy roof extension can also be added to module 03 in this configuration for additional height over the main living space.

Potential Uses: Primary residence, short- or long-term rental unit, laneway house, backyard ADU.

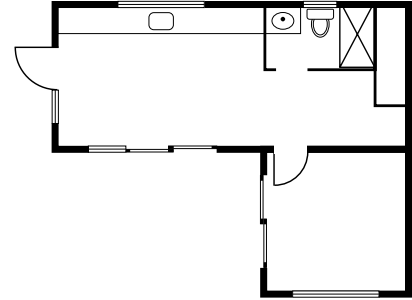
L x W (footprint)	Interior Living Space	Shape	Max # of Bedrooms	Max # of Baths	Kitchen Option	Base Price*
41' x 11'2" (451ft ²)	359 ft ²	Rectangle	2	1 2pc. + 1 full bath	Yes	\$200,000

*For units with a Canopy roof extension, add \$10,000 to base price.

06L / 06L+



06R / 06R+



+ (Canopy L)



+ (Canopy R)

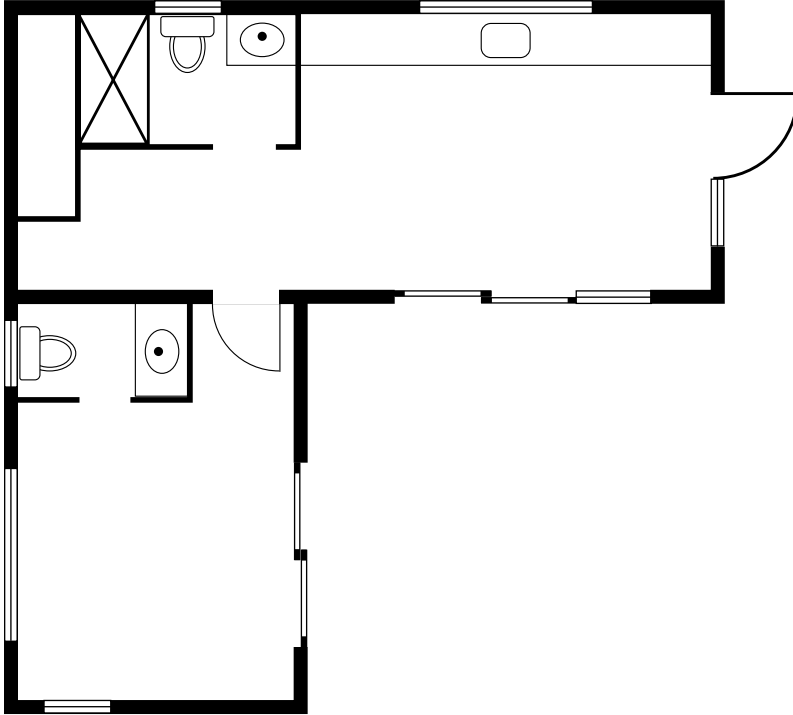


Potential Uses: Primary residence, short- or long-term rental unit, laneway house, backyard ADU.

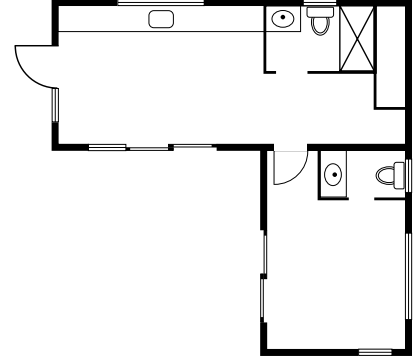
L x W (footprint)	Interior Living Space	Shape	Max # of Bedrooms	Max # of Baths	Kitchen Option	Base Price*
22'4" x 26'6" 415ft ²	322 ft ²	Rectangle	2	1 full bath	Yes	\$195,000

*For units with a Canopy roof extension, add \$10,000 to base price.

07L / 07L+



07R / 07R+



+ (Canopy L)



+ (Canopy R)

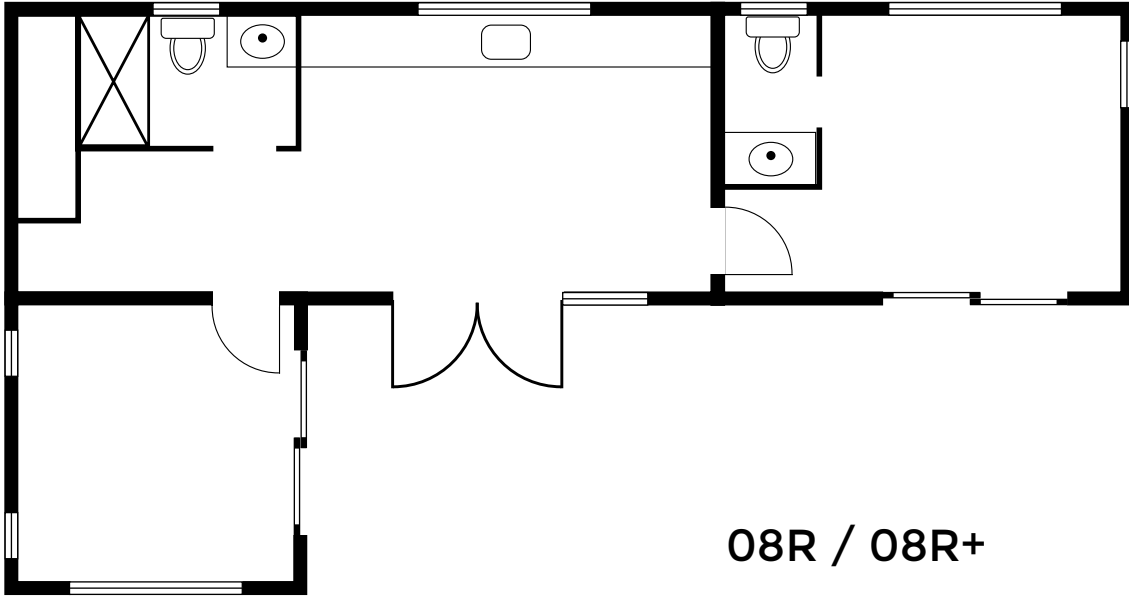


Potential Uses: Primary residence, short- or long-term rental unit, laneway house, backyard ADU.

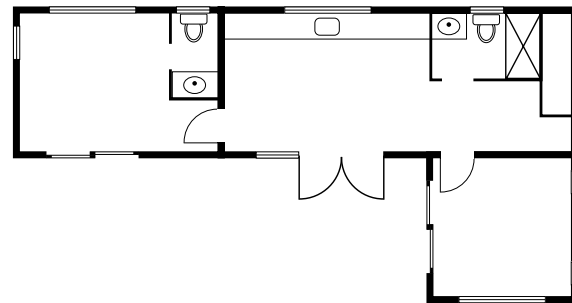
L x W (footprint)	Interior Living Space	Shape	Max # of Bedrooms	Max # of Baths	Kitchen Option	Base Price*
25'8" x 26'6" (454ft ²)	359 ft ²	Rectangle	2	1 2pc. + 1 full bath	Yes	\$200,000

*For units with a Canopy roof extension, add \$10,000 to base price.

08L / 08L+



08R / 08R+



+ (Canopy L)



+ (Canopy R)



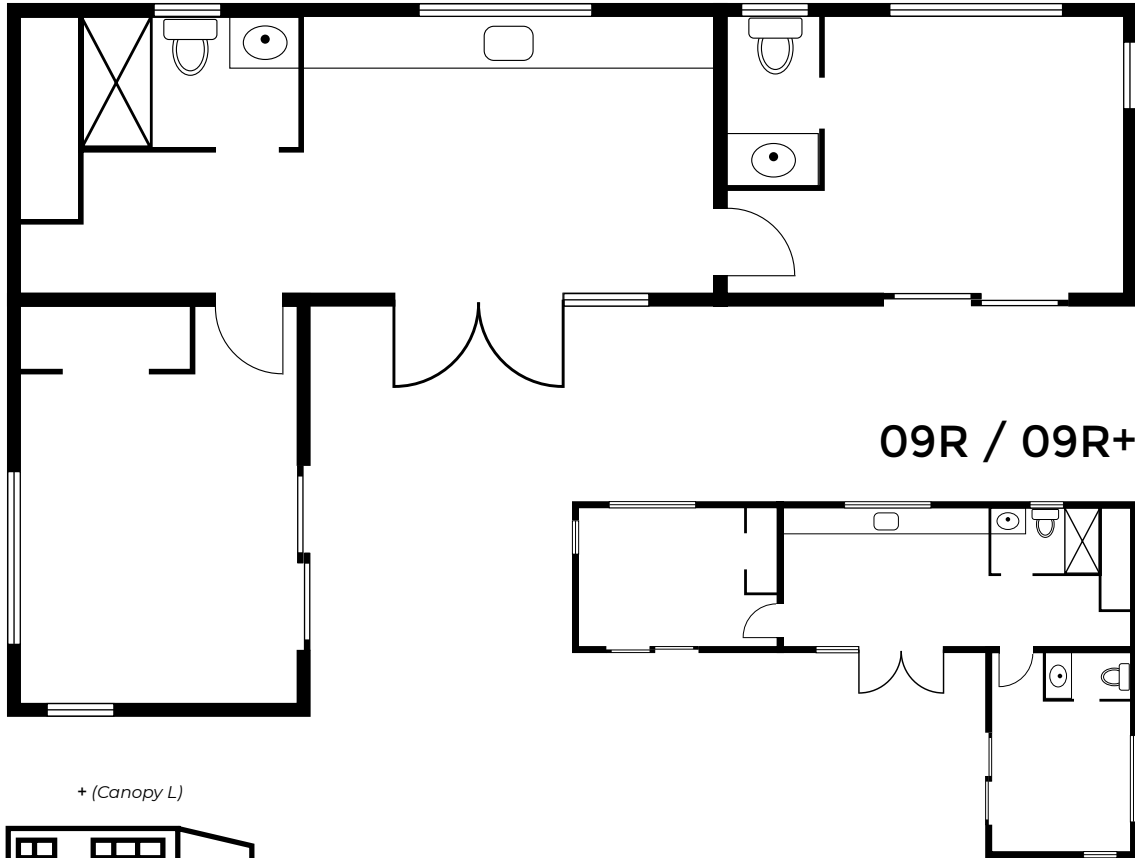
If you want a two bedroom tiny home, space for visitors, hobbies, an office, storage, extra washrooms, etc., you can have them with this module assembly (01 + 02 + 03).

Potential Uses: Primary residence, short- or long-term rental unit, laneway house, backyard ADU.

L x W (footprint)	Interior Living Space	Shape	Max # of Bedrooms	Max # of Baths	Kitchen Option	Base Price*
22'4" x 41' 579ft ²	451ft ²	Rectangle	2	1 2pc. + 1 full bath	Yes	\$250,000

*For units with a Canopy roof extension, add \$10,000 to base price.

09L / 09L+



+ (Canopy L)



+ (Canopy R)

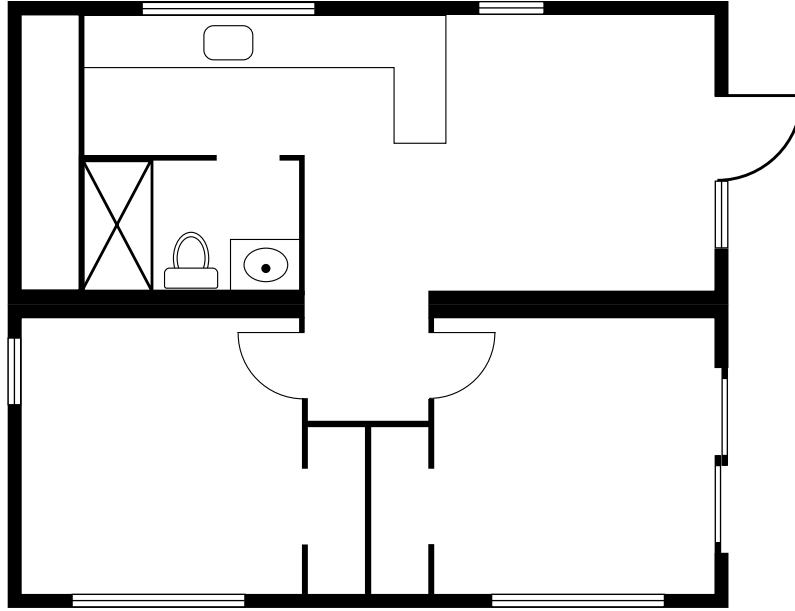


Potential Uses: Primary residence, short- or long-term rental unit, backyard ADU.

L x W (footprint)	Interior Living Space	Shape	Max # of Bedrooms	Max # of Baths	Kitchen Option	Base Price*
25'8" x 41' (616ft ²)	554 ft ²	Rectangle	2	2 2pc. + 1 full bath	Yes	\$260,000

*For units with a Canopy roof extension, add \$10,000 to base price.

10 / 10+



+ (Canopy L)



+ (Canopy R)



Potential Uses: Primary residence, short- or long-term rental unit, laneway house, backyard ADU.

L x W (footprint)	Interior Living Space	Shape	Max # of Bedrooms	Max # of Baths	Kitchen Option	Base Price*
22'4" x 26'6" 592ft ²	460ft ²	Rectangle	3	1 full bath	Yes	\$250,000

*For units with a Canopy roof extension, add \$10,000 to base price.

Customizing your Būot Tiny Home

Because we come from a custom home building background, we consider form and function equally in our designs. The outcome is beautiful, purposeful, efficient design that gives you everything you truly need and puts money back in your pocket so you can get out and enjoy life.

We can make alterations to most of our modular pre-fabricated units to include:

- Propane on-demand hot water and cooking appliances
- Cabinetry and interior finish upgrades
- Furniture and decor packages
- Off-grid package (tanks for water supply and waste, solar power, composting or incinerating toilet)
- storage shed
- covered parking
- sustainable/low carbon footprint package (finishes, fixtures are low emission/low flow, ethically and/or locally sourced, recycled or recyclable)
- Solar power
- Full-size appliances
- Home automation features (Mobile app configuration for timing and remote control of lighting and heating, Security system, Canopy windows opening/closing, in-wall/ceiling speakers)
- Built-in murphy bed/storage wall
- wood burning stove and chimney
- electric vehicle charger
- exterior decks and porch roof